

*The high-resolution*  
**hemoglobin screening**  
*method for everyone*



**sebia**   
The new language of life

# Why Hemoglobinopathy screening matters?

Hemoglobinopathies are abnormalities that affect the protein part of hemoglobin (Hb). They are **the most common single gene disorders in the world**, with an ever-increasing global disease burden each year which is accentuated by migration of population.

The most severe types are **sickle cell disease** and **alpha/beta thalassemia major**.



Rapid and accurate diagnosis of hemoglobinopathies is crucial to enable **optimal management of affected individuals** but also to **provide genetic counselling** and reproductive options for carriers.

Sebia's Capillary Electrophoresis technology is a **proven solution for laboratories and clinicians** in the screening for hemoglobinopathies, a field of growing importance across the globe.

## Key features



### Fully Automated Hemoglobin Testing

Load-and-go workflow improves efficiency and reduces hands-on-time.



### High Resolution

High resolution separation indicates patient variant status with color coded profiles for quick result validation.



### Accurate & Precise

Approved for quantitation of common Hb variants, Hb F and Hb A2 for thalassemia screening.



### On-Board Identification Assistance

Simplified presumptive identification using zones with the built-in Hb variant library and x-migration positions.

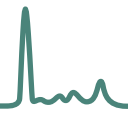


### Easy to Use

Whole-blood, capped tubes with automated on-board sample mixing eliminates the need for manual processing.

## A solution for every laboratory

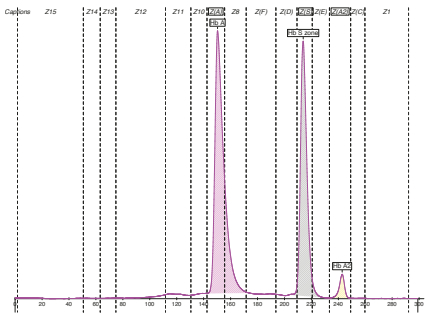
With **Sebia's broad range of capillary instruments for hemoglobin testing**, a solution exists for your laboratory workload.



## Easy detection of common & rare hemoglobin variants

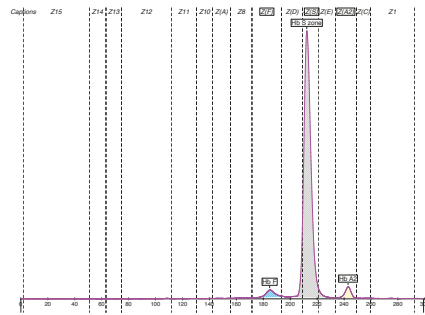
## Straightforward & reliable detection of thalassemias

### Heterozygous Hb S



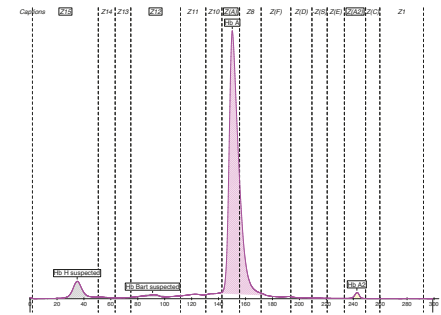
Fractions	Value %
Hb A	57.5
Hb S zone	39.5
Hb A2	3.0

### Homozygous Hb S



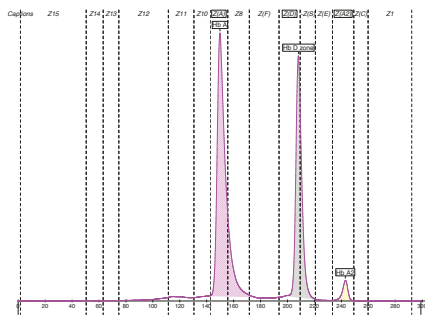
Fractions	Value %
Hb F	3.2
Hb S zone	93.5
Hb A2	3.3

### Alpha-thalassemia (Hb H)



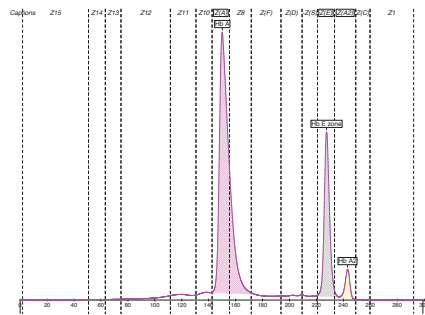
Fractions	Value %
Hb H suspected	5.5
Hb Bart suspected	1.5
Hb A	92.0
Hb A2	1.0

### Heterozygous Hb D-Punjab



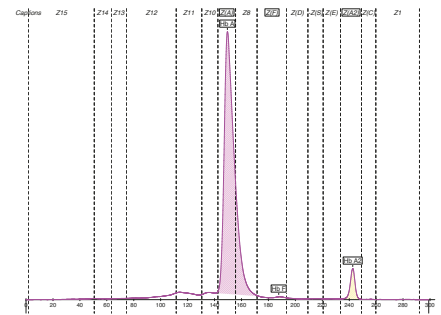
Fractions	Value %
Hb A	58.8
Hb D zone	38.3
Hb A2	2.9

### Heterozygous Hb E



Fractions	Value %
Hb A	71.4
Hb E zone	24.8
Hb A2	3.8

### Beta-thalassemia

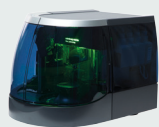


Fractions	Value %	Normal Value %
Hb A	94.4	< 96.8 - 97.8
Hb F	0.4	≤ 0.5
Hb A2	5.2	> 2.2 - 3.2

45 samples /hr.



CAPILLARYS  
OCTA 3



minicap sebia  
flex piercing

7 samples /hr.



CAPILLARYS  
TERA 3

65 samples /hr.

CAPILLARYS  
TERA MC 3



# Ordering information

## Instruments

- CAPILLARYS 3 TERA .....1246
- CAPILLARYS 3 OCTA .....1245
- MINICAP FLEX-PERCING .....1232

## Controls

- NORMAL Hb A2 CONTROL (5) .....4778
- PATHOLOGICAL Hb A2 CONTROL .....4779
- Hb AFSC CONTROL .....4792

## Accessories

- CAPILLARYS 3  
SWITCH RACK HEMOGLOBIN(E) .....1373

## Consumables

- CAPILLARYS 3  
CAPICLEAN .....2060
- CAPILLARYS 3  
WASH SOLUTION .....2062
- CAPI 3  
REAGENT CUPS (24 x 14) .....2582
- CAPI 3  
BINS FOR USED REAGENT CUPS (5) .....2581
- MINICAP FLEX-PIERCING  
CAPICLEAN .....2251
- TEST TUBES (200) .....9214

## Reagents

- CAPI 3 HEMOGLOBIN(E) .....2507
- MINICAP HEMOGLOBIN(E) .....2207



Scan here  
for more  
information

about hemoglobin  
testing solutions

For further information, please find your Sebia local representative to  
contact on our Website [www.sebia.com/sebia/worldwide-presence/](http://www.sebia.com/sebia/worldwide-presence/).

**Sebia** | RCS Evry 672 041 902 | Parc technologique Léonard de Vinci | 27, rue Léonard de Vinci |  
CP 8010 Lisses | 91008 Evry cedex | France | Tel.: +33 1 69 89 80 80 | E-mail: [sebia@sebia.com](mailto:sebia@sebia.com) |  
[www.sebia.com](http://www.sebia.com)

©2024 **Sebia** - RCS Evry 672 041 902 | Parc technologique Léonard de Vinci | 27, rue Léonard de Vinci | CP 8010 Lisses | 91008 Evry cedex | France  
- Ref.: HBB2EN - 07/2023 Non-contractual illustration - Sebia reserves the right to modify at any time and without notice the information  
contained in this document intended for healthcare professionals. This document contains information intended for wide distribution and  
may therefore contain product details or information that is not available or valid in your country. Carefully read the instructions in the reagent  
package inserts and instrument manuals.

Distributed by Abacus dx

1800 ABACUS (AUS) 0800 222 170 (NZ) | [info@abacusdx.com](mailto:info@abacusdx.com) | [www.abacusdx.com](http://www.abacusdx.com)

abacus dx